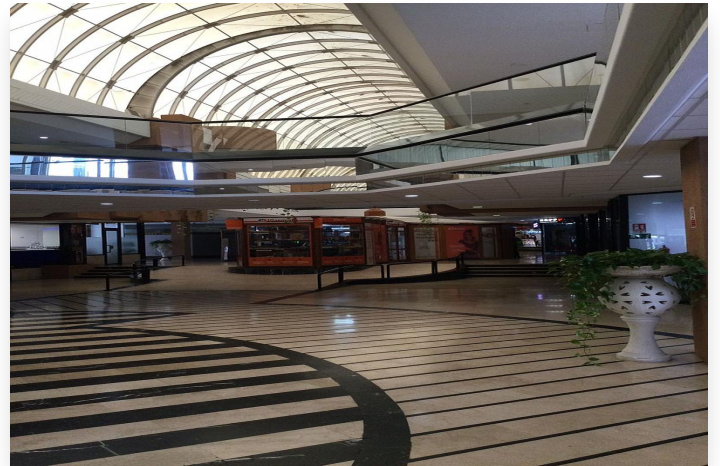


Commercial in Puerto Banús

Price: 375,000 €

Reference: R3748636 Bedrooms: 0 Bathrooms: 0 Plot Size: 0m² Build Size: 70m² Terrace: 0m²



Location: Puerto Banús

Great business opportunity to purchase commercial locals in Puerto Banus Marbella, great position, steps away from the Port, in the Commercial Cristamar, with outside parking, and popular shopping area. The Local has unique feature as you are able to purchase ground and top local, with adjoining internal access, as well as one having bathroom and small kitchen area, The business ideas are endless.

Features:

Setting

Commercial Area

Beachside

Close To Port

Town

Close To Shops

Close To Sea

Close To Marina

Views

Mountain

Street

Orientation

East

Climate Control

Air Conditioning

Parking

Street

Category

Investment