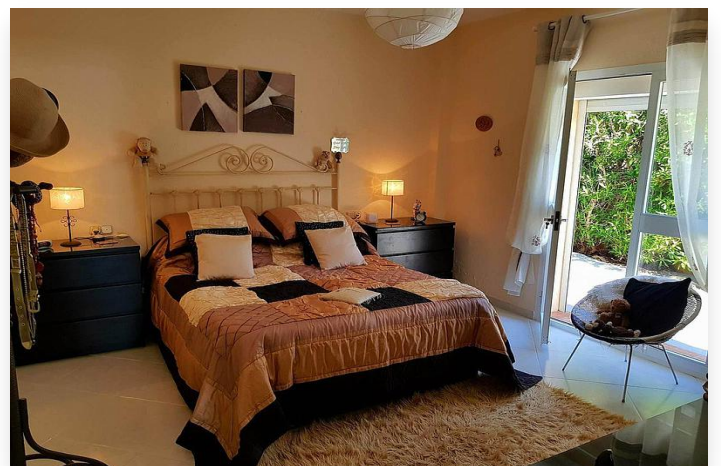


Villa in Manilva

Price: 550,000 €

Reference: R3311410 Bedrooms: 3 Bathrooms: 4 Plot Size: 1,072m² Build Size: 280m² Terrace: 0m²



Location: Manilva

Detached Villa, Punta Chullera, Costa del Sol.

3 Bedrooms, 4 Bathrooms, Built 250 m², Terrace 100 m², Garden/Plot 722 m².

Setting : Beachfront, Close To Golf, Close To Port, Close To Shops, Close To Sea, Close To Town, Close To Schools, Urbanisation.

Orientation : South.

Condition : Excellent.

Pool : Private.

Climate Control : Fireplace.

Views : Sea, Port, Panoramic, Garden, Pool, Courtyard.

Features : Fitted Wardrobes, Private Terrace, ADSL / WIFI, Guest Apartment, Storage Room, Utility Room, Ensuite Bathroom, Jacuzzi, Double Glazing.

Furniture : Optional.

Kitchen : Fully Fitted.

Garden : Communal.

Security : Entry Phone.

Parking : Garage, More Than One.

Utilities : Electricity, Drinkable Water, Telephone.

Category : Investment, Luxury.

Features:

Setting

Close To Golf
Close To Port
Urbanisation
Close To Shops
Close To Sea
Close To Town
Close To Schools
Beachfront

Climate Control

Fireplace

Kitchen

Fully Fitted

Parking

Garage
More Than One

Orientation

South

Views

Sea View
Panoramic
Port

Garden

Communal

Utilities

Electricity
Drinkable Water
Telephone

Pool

Private

Features

Ensuite Bathroom
Private Terrace

Security

Entry Phone

Category

Investment
Luxury